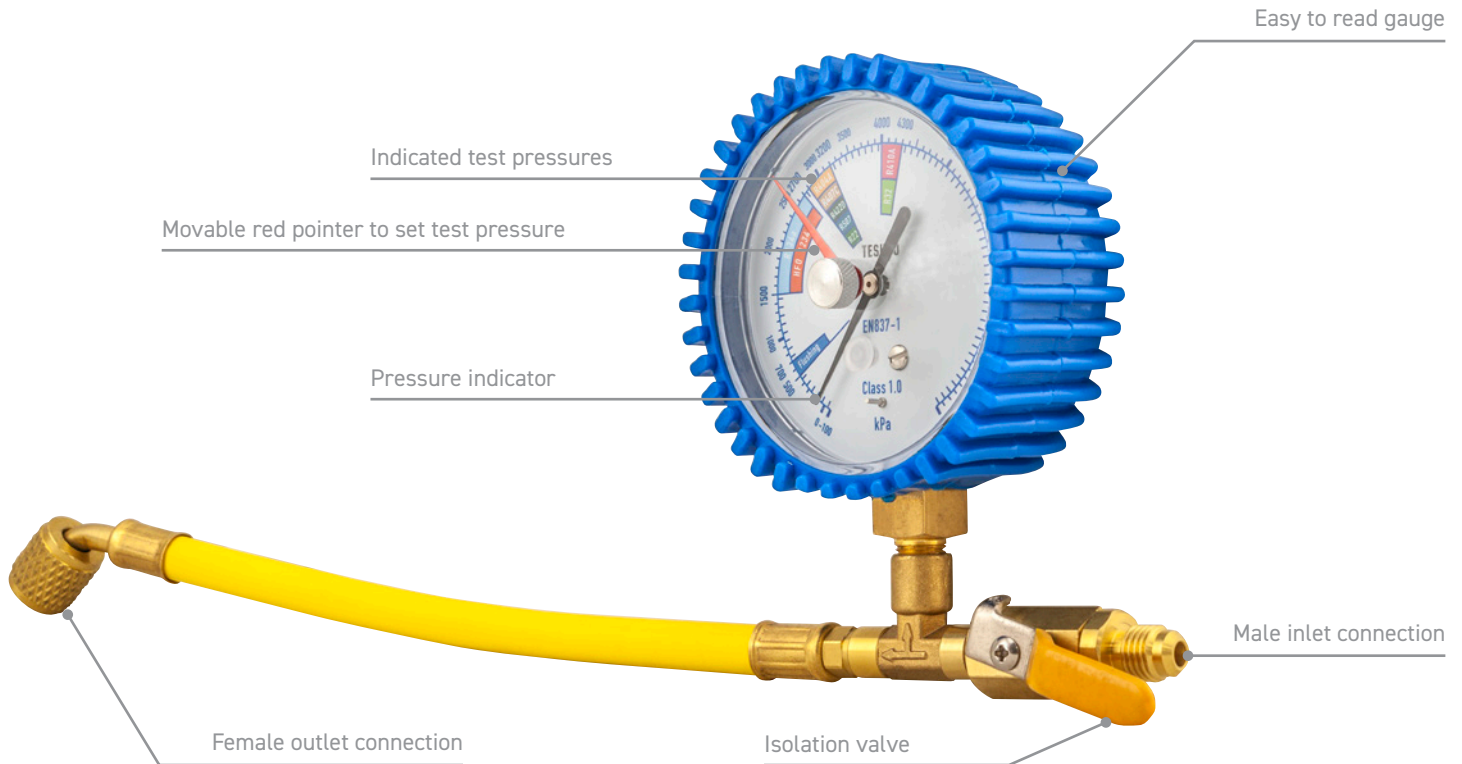


HVAC-R Equipment

Refrigerant Test Gauge, Hose & Valve Unit



Tesuco® introduces a new economical, built for purpose product for the HVAC-R industry. This unit is used as an accessory with our 6,000 kPa nitrogen regulator to easily perform pressure testing for equipment using the various refrigerant gases. The test pressures aligned to a particular refrigerant are indicated in the colour coded shaded areas on the gauge. A movable pointer can be set at the correct pressure, when the regulator is adjusted to reach this pressure the valve can be closed, isolating the supply and then the unit measured for pressure drop.

FEATURES

- Isolation valve
- Pressure indicator
- Large 80 mm easy to read gauge
- Movable red pointer to set test pressure
- Indicated test pressures for refrigerants

SPECIFICATIONS

Maximum Pressure

OTRGHV

10,000 kPa

Inlet Connection

1/4" SAE flare male

Outlet Connection

5/16" SAE flare female

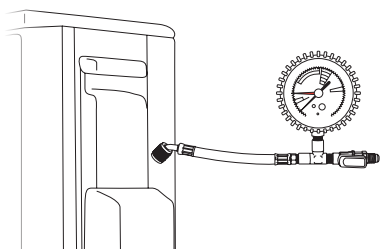


Use 6,000 kPa
 Nitrogen Regulator
 Part No: R11SNI60C



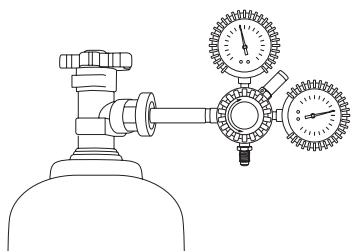
Refrigerant Test Gauge, Hose & Valve Unit Instructions

STEP
1



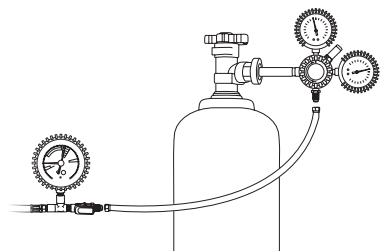
Connect the 5/16" SAE flare female nut on the test gauge to a male unit on the test piece.

STEP
2



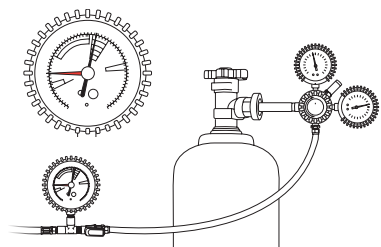
Connect the RI1SNI60C nitrogen regulator to the nitrogen cylinder.

STEP
3



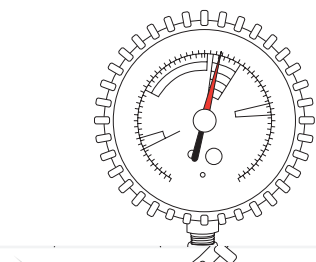
Connect a suitably rated pressure hose between the regulator outlet and the test gauge inlet.

STEP
4



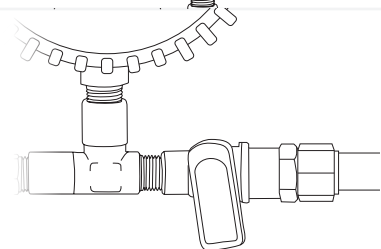
Set the test pressure as indicated on the test gauge by adjusting the pressure on the regulator.

STEP
5



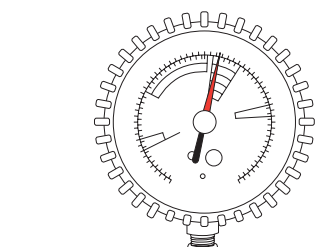
Move the red pointer so it sits above the pressure gauge needle at the pressure set.

STEP
6



Close the isolation valve.

STEP
7



If over time the pressure gauge needle drops below the red pointer, there is a leak.

Use Tesuco® leak detection spray (OTLDS) to locate obvious leaks.
Or use Tesuco® LeakXpose (GTNIHY2) and electronic detector to find minor leaks.