

SD3 HSO NOZZLES

Optimised for manual operation. Allows for uneven movements or changes to the nozzle distance during the cutting process. The rugged construction also makes this nozzle ideal for scrap cutting applications.

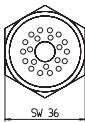


CUTTING THICKNESS RANGE

| mm | SD3 HSO |
|-----|---------|
| 0 | |
| 100 | |
| 200 | |
| 300 | |
| 400 | |
| 500 | |
| 600 | |
| 700 | |
| 800 | |

MAIN CHARACTERISTICS

| | |
|---------------------|---------------|
| Spanner width range | SW 36 |
| Gas pressure range | 0.5 – 1.2 bar |



| | |
|--|-----------|
| ITEM NO. | 107884 |
| CUTTING THICKNESS RANGE (mm) | 50 – 500 |
| CONSUMPTION (Nm³/h) | |
| Heating oxygen flow by natural gas | 17 – 20 |
| Gas flow by natural gas | 15 – 18 |
| Heating oxygen flow by propan gas | 20 – 24 |
| Gas flow by propan gas | 10 – 14 |
| Cutting oxygen flow | 95 |
| PRESSURE CUTTING (bar) | |
| Heating oxygen pressure by natural gas | 1.8 – 2.2 |
| Gas pressure by natural gas | 0.8 – 1.2 |
| Heating oxygen pressure by propan gas | 2.0 – 2.5 |
| Gas pressure by propan gas | 0.5 – 0.8 |
| Cutting oxygen pressure | 8 |
| APPLICABLE CUTTING TORCHES | |
| SHBA | + |
| SHBS | + |
| SPANNER WIDTH | SW 36 |