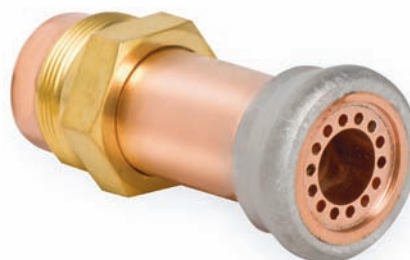


HFD 1F NOZZLES

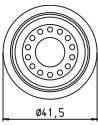
Especially designed for the hand scarfing process. Well protected against abrasive movements with reinforced wearing ring, allowing for a long lifespan.

With its nozzle seat well anchored in the nozzle holder, the HFD 1F introduces an improved safety standard in the hand scarfing process.



MAIN CHARACTERISTICS

Spanner width	SW 36
Scarfig oxygen pressure	10bar
Gas pressure range	0.3 – 0.5bar



ITEM NO.	107648
CONSUMPTION (Nm³/h)	
Heating oxygen flow by natural gas	19
Gas flow by natural gas	24
Scarfig oxygen flow	147
PRESSURE CUTTING (bar)	
Heating oxygen pressure by natural gas	1.4 – 1.7
Gas pressure by natural gas	0.3 – 0.5
Scarfig oxygen pressure	10
APPLICABLE SCARFING TORCHES	
MST 1500	+
MST 1200 CGA	+
SPANNER WIDTH	SW 36